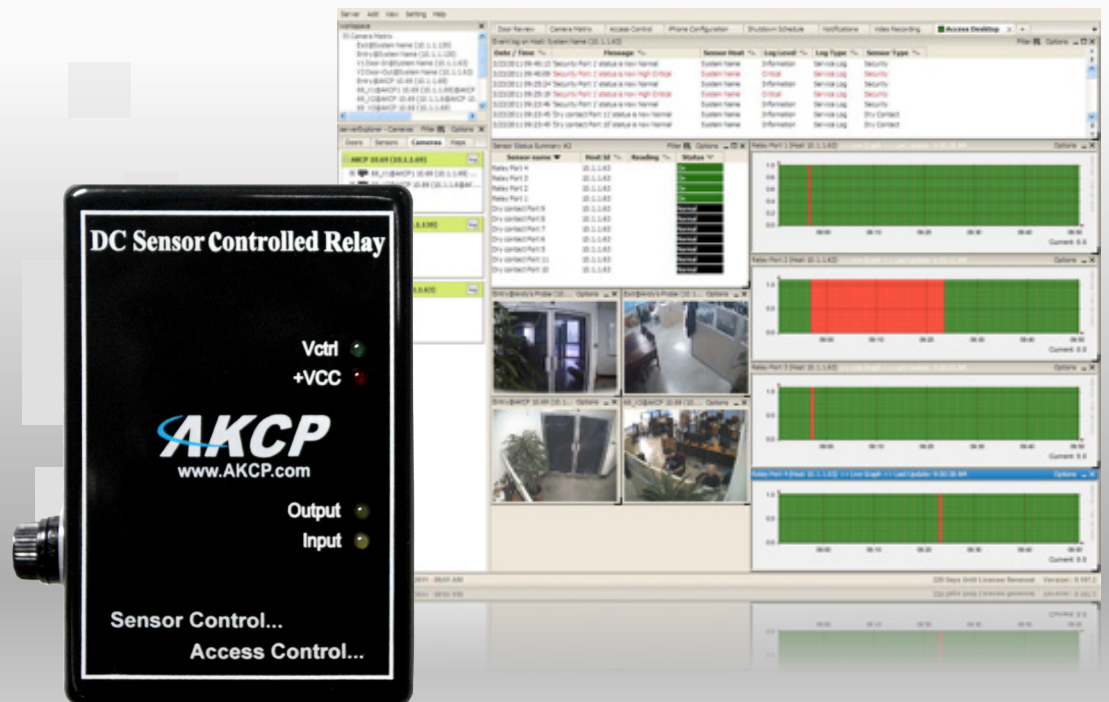


DC Sensor Controlled Relay - PRB00-DCX



DC Sensor Controlled Relay

The DC-Sensor Controlled Relay controls the electrical power to devices over the Internet. With easy configuration & integration with sensorProbe product series, It defines a new era in energy management.

The DC-Sensor Controlled Relay provides 1 high power SPST 5V relay. It includes Metal Oxide Varistors (MOVs) and Snubber circuits to protect the open contact of the relays from the high voltage spikes or noise transients.

It monitors the power & load and accepts a control signal which is sent from the sensorProbe.

DC Sensor Controlled Relay's Main Features

- 4 LEDs indicate the status of the Relay, Power Supply, DC Line Voltage and DC Load Voltage.
- Up to two Power Relay Boards per sensorProbe2, up to 8 per sensorProbe8 and securityProbe series.
- Full auto sense including disconnect alarm.
- The sensor can be extended to your desired cable length using one of our CAT5 extension cables, CABXX, or you can provide your own cable of any length up to 100 feet.

Technical Specifications

Maximum Input Voltage : 48 VDC

Maximum Output Voltage : 48 VDC

Contact Rating : Contact Rated Load = 10Amps at 48 VDC

Carry Current : 10 Amps

Max Operating Voltage : 48 VDC

Max Operating Current : 10 Amps

Max Switching Capacity : 4000 VA, 480W with Resistive Load 2000 VA, 240W with
Inductive Load(P.F=0.4)

Min Permissible Load : 100mA 5 VDC

Power Consumption : Typical 471.00 mWatt, 94.20mA

PCB Copper Track Rating : 10 Amps

10 Amps Fuse : 250 VDC

Dimensions : 115(w) x 80(H) x 40(D) mm

Operating Temperature : -40 C to 85 C

Weight : 250 gms